

live letter

COLLECTION of ORB

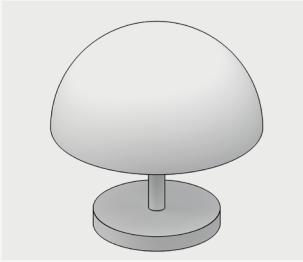


Designer Ufuk CEYLAN

ORB DESKTOP LIGHTING

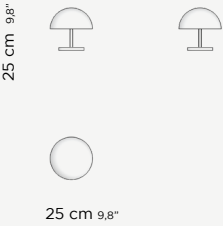
ORB DESKTOP LIGHTING, which gives light to your space with its quality and elegance, brings metal together with the most perfect form. The Orb Table Lamp, which is in the shape of a hemisphere, stands out not only as a functional lighting but also for its simple and timeless design. Its minimalist appearance is enriched by its brass-plated surface, adding a stylish touch to any space.

ORB DESKTOP LIGHTING



DIMENSIONS

H: 25 cm / 9,8 inc
R: 25 cm / 9,8 inc



USER GUIDE

USER GUIDE OF BRASS AND IRON

Avoid leaving household liquids (oil, red wine, vinegar, etc.) on the surface. In particular, products that contain citric acid (present for example in fruit, citrus fruit and tomatoes) act on contact with the treated surface, removing its original sheen. Always clean stains while they are still fresh. For routine maintenance use a microfiber cloth and water. Do not use products containing acids.

USER GUIDE OF GLASS

Glass is a simple, stain-proof, wipe-down surface. We recommend cleaning by spraying Windex on a paper towel and then wiping the countertop. Towel-dry after each use to avoid water spots. Do not use abrasive cleaners, they will create a haze on the glass. Avoid chopping or preparing food directly on the glass to prevent or minimize scratches. Also, take care not to place unglazed pottery on your glass surface. Hot liquids will not damage the surface, however, the use of a trivet is recommended for very hot pots and pans from the stove or oven. For back painted glass, take care not to scratch the bottom paint coat. Glass can be spot polished by machine to remove slight scratches. Spot polishing can cause minor changes in the curvature of the glass and can cause slight changes to the reflection.

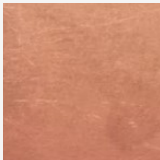
STRUCTURE FINISHES

METAL

ANTIQUE BRASS



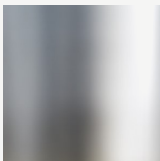
ANTIQUE BRONZE



CHROME MATT



SHINY CHROME



SMOKED SHINY CHROME



BLACK GOFRADO



Materials can be changed according to project or material supply.