

*live letter*

## COLLECTION of FAMED



**Designer** Ufuk CEYLAN

## FAMED CHAIR

The Famed chair, where comfortable sitting is at the forefront, creates a fascinating image with the compact space it occupies when used with the dining table. The chairs of the series, which creates the integrity of the Rubik's cube, have the complementary feature that every modern space is looking for, with matt chrome, black metal and classic Famed options.

Teşvikiye Mahallesi,  
Güzelbahçe sokak, No:1A  
Nişantaşı, Şişli / İSTANBUL

lagu.shop  
info@lagu.com.tr

+90 850 305 52 48  
+90 533 498 52 48

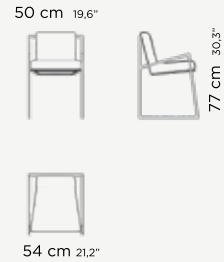


FAMED CHAIR



**DIMENSIONS**

W: 50 cm / 19,6 inc  
 H: 77 cm / 30,3 inc  
 D: 54 cm / 21,2 inc



**USER GUIDE**

**USER GUIDE OF BRASS AND IRON**

Avoid leaving household liquids (oil, red wine, vinegar, etc.) on the surface. In particular, products that contain citric acid (present for example in fruit, citrus fruit and tomatoes) act on contact with the treated surface, removing its original sheen. Always clean stains while they are still fresh. For routine maintenance use a microfiber cloth and water. Do not use products containing acids.

**USER GUIDE OF UPHOLSTERED FURNITURE**

When your upholstery is made up of fine fabrics, leather or leatherette, remember that direct sunlight will destroy your upholstery with prolonged exposure. The ultraviolet rays in sunlight work to deteriorate the condition and lifetime of your upholstery. A little exposure to the sun every now and then is harmless, but do keep your favourite upholstered furniture out of harm's way by drawing the blinds or placing them out of areas that receive direct sunlight. The longer you avoid vacuuming your upholstery, the worse the damage. Dust settles on everything in your home, your upholstery included. Whenever you sit on your sofas and chairs, the weight forces the dust down deeper into the fibers of the upholstery. With prolonged periods of no maintenance, the dust acts like an abrasive, cutting, and scraping your upholstery on a microscopic level, thus causing the material to wear out a lot faster. You should regularly flip your upholstered cushions (both the seat and the back cushions) depending on the frequency of their use. You will find that your upholstery will wear out evenly and your cushions will maintain their shape for longer.

**USER GUIDE OF LEATHER**

For everyday cleaning, simply wipe the surface with a clean, dry, non-abrasive, preferably white cloth. Dry dirt can be easily removed with the use of a soft bristle brush. You can also use a medium power vacuum cleaner with a suitable attachment, and avoid rubbing the surface with it. Any stains caused from water soluble substances (soft drinks, coffee, tea, milk, chocolate, oil, grease, make-up) should be removed quickly by gently dabbing the surface with a dry cloth or paper towel. Do not use a hairdryer and avoid exposing to direct sunlight.

**CAUTION**

Do not place leather furniture or sofas near any source of heat such as fireplaces, stoves or radiators. The minimum distance must be 50cm. The upholstery will maintain its original colour by avoiding placing the sofa in direct sunlight or near artificial light sources, especially halogen lights. In fact both artificial light and sunlight can permanently damage leather upholstery, as can unsuitable detergents. Natural leather upholstery makes each sofa a unique piece because every hide is one of a kind. Specific Nabuk cleaner and care kit, including specific products and accessories is available upon request.

## FABRIC

## STRUCTURE FINISHES

HERMES 01



HERMES 02



HERMES 04



HERMES 13



KENZO PINK



KENZO BLUE



KENZO BROWN



BLACK CANDLEWICK



WHITE CANDLEWICK



MUSTARD CANDLEWICK



LORD 04



LORD 24



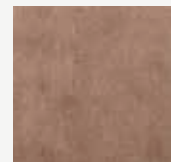
LORD 26



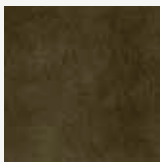
LORD 29



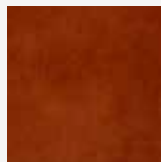
LORD 34



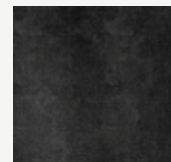
LORD 38



LORD 49



LORD 76



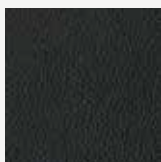
LORD 84



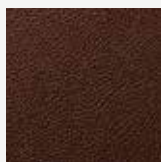
Materials can be changed according to project or material supply.

## LEATHER

BLACK  
LEATHER



BROWN  
LEATHER



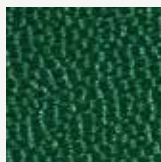
TABA  
LEATHER



BEIGE  
LEATHER



GREEN  
LEATHER



## METAL

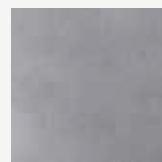
ANTIQUE  
BRASS



ANTIQUE  
BRONZE



CHROME  
MATT



SHINY  
CHROME



SMOKED  
SHINY CHROME



BLACK  
GOFRADO



## STRUCTURE FINISHES