

live letter

COLLECTION of RECALLED



Designer Ufuk CEYLAN

RECALLED CHAIR

Inspired by ancient cities, the RECALLED series brings the fascinating aesthetics of the past to daily lives. RECALLED chairs, which have a pedestal-like back structure, reveal a balanced harmony with the dining tables of the collection with their elegance. With its aesthetic form, brass details and the energy of the red patterned fabric, the RECALLED chair manages to offer a suitable option for every dining area.

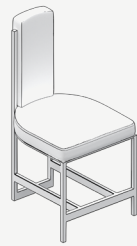
Teşvikiye Mahallesi,
Güzelbahçe sokak, No:1A
Nişantaşı, Şişli / İSTANBUL

lagu.shop
info@lagu.com.tr

+90 850 305 52 48
+90 533 498 52 48

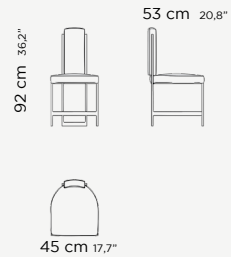


RECALLED CHAIR



DIMENSIONS

W: 45 cm / 17,7 inc
 H: 92 cm / 36,2 inc
 D: 53 cm / 20,8 inc



USER GUIDE

USER GUIDE OF BRASS AND IRON

Avoid leaving household liquids (oil, red wine, vinegar, etc.) on the surface. In particular, products that contain citric acid (present for example in fruit, citrus fruit and tomatoes) act on contact with the treated surface, removing its original sheen. Always clean stains while they are still fresh. For routine maintenance use a microfiber cloth and water. Do not use products containing acids.

USER GUIDE OF UPHOLSTERED FURNITURE

When your upholstery is made up of fine fabrics, leather or leatherette, remember that direct sunlight will destroy your upholstery with prolonged exposure. The ultraviolet rays in sunlight work to deteriorate the condition and lifetime of your upholstery. A little exposure to the sun every now and then is harmless, but do keep your favourite upholstered furniture out of harm's way by drawing the blinds or placing them out of areas that receive direct sunlight. The longer you avoid vacuuming your upholstery, the worse the damage. Dust settles on everything in your home, your upholstery included. Whenever you sit on your sofas and chairs, the weight forces the dust down deeper into the fibers of the upholstery. With prolonged periods of no maintenance, the dust acts like an abrasive, cutting, and scraping your upholstery on a microscopic level, thus causing the material to wear out a lot faster. You should regularly flip your upholstered cushions (both the seat and the back cushions) depending on the frequency of their use. You will find that your upholstery will wear out evenly and your cushions will maintain their shape for longer.

USER GUIDE OF LEATHER

For everyday cleaning, simply wipe the surface with a clean, dry, non-abrasive, preferably white cloth. Dry dirt can be easily removed with the use of a soft bristle brush. You can also use a medium power vacuum cleaner with a suitable attachment, and avoid rubbing the surface with it. Any stains caused from water soluble substances (soft drinks, coffee, tea, milk, chocolate, oil, grease, make-up) should be removed quickly by gently dabbing the surface with a dry cloth or paper towel. Do not use a hairdryer and avoid exposing to direct sunlight.

CAUTION

Do not place leather furniture or sofas near any source of heat such as fireplaces, stoves or radiators. The minimum distance must be 50cm. The upholstery will maintain its original colour by avoiding placing the sofa in direct sunlight or near artificial light sources, especially halogen lights. In fact both artificial light and sunlight can permanently damage leather upholstery, as can unsuitable detergents. Natural leather upholstery makes each sofa a unique piece because every hide is one of a kind. Specific Nabuk cleaner and care kit, including specific products and accessories is available upon request.

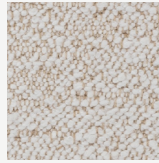
FABRIC

STRUCTURE FINISHES

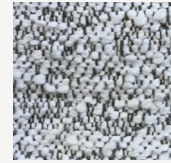
HERMES 01



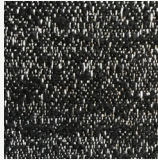
HERMES 02



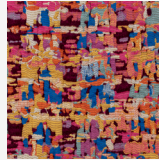
HERMES 04



HERMES 13



KENZO PINK



KENZO BLUE



KENZO BROWN



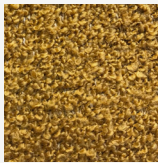
BLACK CANDLEWICK



WHITE CANDLEWICK



MUSTARD CANDLEWICK



LORD 04



LORD 24



LORD 26



LORD 29



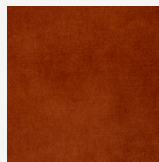
LORD 34



LORD 38



LORD 49



LORD 76



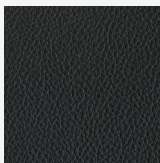
LORD 84



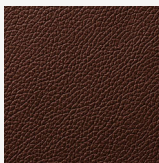
Materials can be changed according to project or material supply.

LEATHER

BLACK
LEATHER



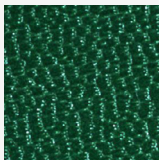
BROWN
LEATHER



BEIGE
LEATHER



GREEN
LEATHER

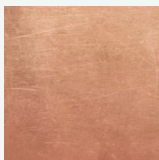


METAL

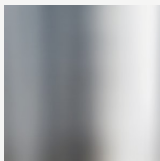
ANTIQUE
BRASS



ANTIQUE
BRONZE



SHINY
CHROME



SMOKED
SHINY CHROME



TABA
LEATHER



CHROME
MATT



BLACK
GOFRADO



STRUCTURE FINISHES